

**OREGON PUBLIC LAND CORNER REPORT / RESTORATION REPORT**  
Tillamook County Surveyor's Office

BOOK 8 198

<b>SECTION: 31 and 32</b>	<b>TOWNSHIP: 1 North</b>	<b>RANGE: 9 West</b>
<b>COUNTY: Tillamook</b>		<b>DATE: 8/30/2023</b>
<b>CORNER DESIGNATION:</b> The South 16 <sup>th</sup> corner common to Sections 31 & 32, Township 1 North, Range 9 West, Willamette Meridian, Tillamook County, Oregon.		<b>(Please check one)</b>
		<input type="checkbox"/> Condition Report Only
		<input type="checkbox"/> Restoration
		<input checked="" type="checkbox"/> Rewitness
		<input type="checkbox"/> Unrecorded
		<input type="checkbox"/> Reset at surface
		<input type="checkbox"/> Referenced Out

**Previous Rewitnesses, Restorations and Surveys, etc...**  
Rewitness Card #13 (1973), B-663 (1974), B-952 (1980), P-369 (1996), P-661 (2002), B-3182 (2007), B-3700 (2015), B-4330 (2023).

**History, condition, and sources:** The South 16<sup>th</sup> corner was set prior to the map (B-663) being recorded in 1974. Richard A. Morris set a 1 1/2" x 36" galvanized iron pipe 33" in ground with a 3" Oregon State Board of Forestry Bronze Cap. Three Bearing trees were established, a 7" Alder S 29° E 25.6', Bark scribed; a 20" Spruce N 73 1/2° W 61.0' (RS 401) with a yellow metal location poster; a 21" Fir South 84.0' with a yellow metal location poster and a 4" x 4" x 60" white painted cedar post Northwest 1.0' with a yellow forestry property tag. In 1973 Tillamook County Surveyor's Office rewitnessed the corner (Rewitness Card #13). No historical records have been filed by the Oregon State Board of Forestry yet. A 10" tile was set around the found 3" O.S.B.F. Brass Cap and filled with concrete. Three Bearing trees were located, an 8" Alder S 34° E 25.65' with bark scribed, a 20" Spruce S 73 1/2° E 60.0' scribed S1/16 S 31 BT, a 29" Fir North 81.0' no face or scribing but Yellow Forestry Corner Tag. Also found a 4" x 4" x 48" white post North 1.5' with yellow forestry property tag. Added an 84" Hat Section Post with corner tag North 1.5' and added a yellow corner tag on the 8" Alder. In 1980 (B-952) Harold Russell found corner and 2 Bearing trees. In 1996 (P-369) and 2002 (P-661) Terry Jones found the corner with Hat Section Post 1.5' North, a 4" x 4" white wood post North 1.0' (N 1.5'), a 30" (20") Spruce tree with healed face (N 73 1/2° W 60.0'). In 2023 (Field BK. MR 14 pg. 34 and 35) Tillamook County Surveyor's Office visited the corner and found a 3" O.S.B.F. Brass Cap in good condition as shown hereon.

- Found: (Rewitness Card #13) 14" Alder stump 4' tall S 29° E (8" Alder S 34° E 25.65').
- Found: (Rewitness Card #13) 56" Spruce N 73 1/2° W with yellow metal location tag (20" Spruce S 73 1/2° E 60').
- Found: (Rewitness Card #13) 29" Fir South 81' yellow metal location tag gone (North 81').
- Found: (Rewitness Card #13) 4" x 4" white post N 50° W 0.7' with yellow forestry property tag (North 1.5').
- Found: (Rewitness Card #13) Hat Section Post North 1.5' corner tag gone.

**New accessories set:**

Set: yellow metal location tag on Hat Section Post.

The Monument was tied conventionally using G.P.S. established control. The coordinates have been converted and are provided here in WGS 84, Latitude and Longitude.

Latitude: 45° 31' 28.31"  
Longitude: 123° 49' 25.01"

**Pictures of Found Monuments:**



**Location:** Corner is located ± .5 miles past Kilches Forest road junction. ± 130' North of Kilches River road. ± 150' East of small creek that runs South. In Northwest corner of small clearing.

**Tillamook County Surveyor office:** 1510 3<sup>rd</sup> Street Suite C, Tillamook, OR. 97141

**Party Chief:** Travis Porter, Tillamook County Survey Supervisor

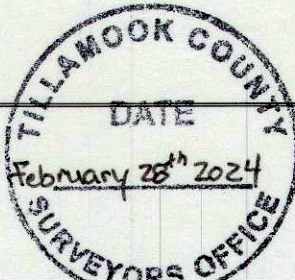
**Witnesses:** Michael Rice, PLS 86926, Tillamook County Surveyor  
Kael Pokliuha, Tillamook County Survey Technician

**Notes:** Digital images taken of monument and accessories.

**SURVEYOR'S SEAL**



RENEWAL 12-31-2024



BOOK 8 198